



FLOOR STANDING GAS CONDENSING BOILER

The Most Advanced, Compact, Efficient Gas Condensing Boiler

VITOCROSSAL 200, CI2



Compact and highly efficient

Mission-critical technology for large residential and commercial applications.

399 - 2,000 MBH

The Vitocrossal 200, CI2 is a versatile central heating boiler offering a highly efficient solution for custom residential, and various commercial applications. With 6 sizes ranging from 399 MBH - 2,000 MBH, this gas-condensing unit can be cascaded for needs up to 32,000 MBH.

Cutting Edge Re-designs

The Vitocrossal 200, CI2 is equipped with a re-designed stainless steel Inox-Crossal heat exchanger designed to stand up to the toughest of water conditions and maximize performance and reliability. It provides the same reliability and efficiency while reducing overall size by over 30%, yet maintains class-leading water volume and low pressure drop.

Fast installation and reduced maintenance come standard with the integrated Lambda PrO₂. The self calibrating active O₂ trim control management system ensures consistently high and efficient combustion quality with low emissions. Lambda PrO₂ with Self Calibrating Active O₂ Trim automatically adjusts to multiple vent options and lengths, gas type and quality right out of the box; no calibration required.

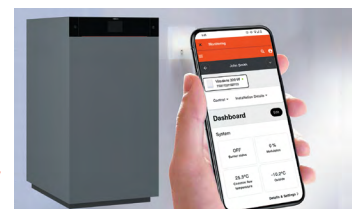
Easy Commissioning, Remote Monitoring, & Trouble Shooting

The Vitocrossal 200, CI2 features a 7-inch touchscreen interface for easy commissioning, status reporting, and diagnostics. With owner dashboard and service technician screens (available in three languages), the CI2 intuitively displays DHW scheduling, multi-zone controls, constant circulation controls and recirculation modes, and gas consumption data with just a few taps.

The integrated LAN and WiFi interface, connects the system directly to the internet for seamless integration with the ViGuide ecosystem for onsite and remote connectivity via smartphone or tablet. ViGuide offers guided commissioning of the boiler, eliminating complex manual parameter settings, and allows remote viewing of the system for timely repairs.



The Vitocrossal 200 CI2 integrates seamlessly with Viessmann One Base, Viessmann's complete digital solution platform featuring applications for contractors and homeowners.



Self calibrating technology automatically adjusts to fuel quality, retaining highest in class efficiencies.



Vitocrossal 200 CI2 units can be hydraulically cascaded for customizable solutions.

Well-suited For Tight Commercial Spaces

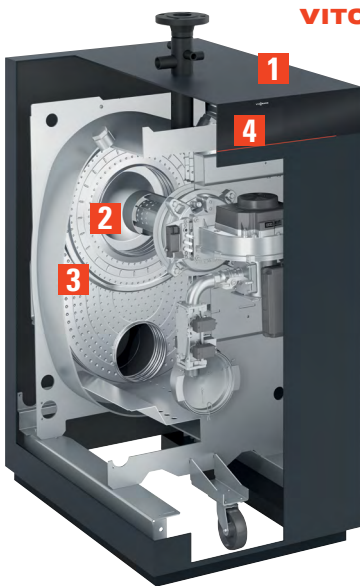
The Vitocrossal 200, CI2 is only 27 inches (68 cm) wide without jacket, requiring a footprint of less than 9.9ft² and fits through any standard door. Integrated rollers and easy-transport pallet allow transport of the boiler to any installation site with no lifting gear required when brought in at ground level. The CI2 is entirely serviceable from the front and back, and thus can be installed side by side as allowed by local and state requirements. Additionally, an integrated cascade controller and BMS gateway (optional) contribute to further space saving in the mechanical room.

MatriX Burner: Ultra Efficient and Clean Combustion

The Viessmann-made modulating MatriX cylinder burner offers extremely clean combustion with up to a 30:1 turndown ratio, and meets Low NOx requirements.

BENEFITS AT A GLANCE

- + Integrated Valve Proving System (VPS) for all sizes
- + Up to 98% thermal efficiency, the highest degree of utilization in its class with cleaner combustion and lower costs
- + Highest water volume in class; no primary boiler pump required
- + Efficient combustion control with Lambda PrO₂ with self calibrating active O₂ trim technology; realtime O₂ trim, fuel conversion and altitude adjustment with the push of a button
- + High operational reliability and long service life with corrosion-resistant Inox-Crossal stainless steel heat exchange; class leading low pressure drop and thermal efficiency
- + Up to 30:1 modulating MatriX cylinder burner ensures long, uninterrupted operation; meets Low NOx certification
- + Cascading of up to 16 devices possible (up to 32,000 MBH)
- + Viessmann One Base enables control via ViGuide app and use of digital services
- + Compact dimensions and small footprint allows for optimal side by side installation even in the tightest spaces
- + Built-in features to allow for easy mobility
- + Convenient servicing - all components are accessible from the front and back of unit
- + External wall mounted Gateway or DIN rail mounted Gateway for up to 8 boilers per gateway. Modbus ICP, Modbus RTU, Bacnet IP, and Bacnet MSTP
- + Utilizes CANbus communication between boilers and gateway system without complex wiring



VITOCROSSAL 200, CI2

399-2000 MBH

- Internet Capable
- 1** Viessmann One Base control platform
- 2** MatriX Cylinder Burner with Lambda PrO₂ with self calibrating active O₂ trim technology
- 3** Inox-Crossal Heat Exchanger
- 4** 7" color touchscreen display

Actual product may vary from illustrated image

TECHNICAL INFORMATION

Model	CI2	399	500	750	1000	1500	2000
Combustion Efficiency *	%	97	97	96.9	96.8	96.6	96.5
Thermal Efficiency *	%	98	97.9	97.8	97.7	97.3	97
Min. Input (NG)	MBH	50	50	75	100	50	100
Max. Input (NG)	MBH	399	500	750	1000	1500	2000
Output (thermal efficiency)	MBH	391	490	734	977	1460	1940
Overall Dimensions							
Width	in.	29½	29½	29½	29½	29½	29½
Height	in.	64½	64½	64½	64½	78¾	78¾
Depth (Length)	in.	39	39	47¼	47¼	56¼	56¼
Weight (burner, control and insulation)							
	lbs.	789	789	963	963	1812	1969
Boiler Water Content							
	USG	29	29	50	50	113	99
Heat Exchanger Surface Area							
	ft ²	65.2	65.2	129.4	129.4	196.2	258.8
Max. Operating Pressure							
	psig	80	80	80	80	80	80
Max. Operating Temperature							
	°F	210	210	210	210	210	210
Flue Outlet Size							
	Ø in	4	4	6	6	6	8

* Tested to ANSI/AHRI Standard 1500 Performance Rating of Commercial Space Heating Boilers / DOE Test Procedure 81 FR89276 / U.S. Standards ANSI Z21.13 / CSA 4.9

Warranty information is available at viessmann-us.com/warranty

Viessmann Manufacturing Company, Inc.
Warwick, RI, 02886
1-800-288-0667
viessmann-us.com

