

Gas Condensing Technology

VITOCROSSAL 300, CU3A

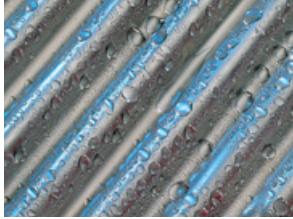
VIESSMANN[®]
climate of innovation[®]



5 Year Warranty
Limited Parts Warranty

Heating Systems ◀
Industrial Systems
Refrigeration Systems

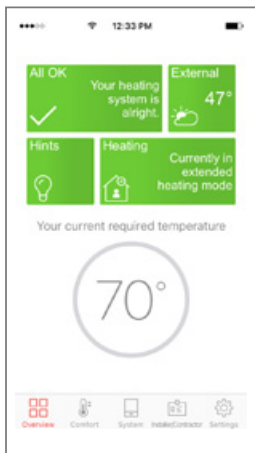
Gas Condensing Technology



Industry-leading Viessmann made SA240 316Ti stainless steel Inox-Crossal steel heat exchanger.



Featuring a folding Vitotronic 200 HO1B boiler and system control.



ViCare App - Comfort at a glance. Program your boiler for ideal temperature and maximum cost savings.

Vitocrossal 300, CU3A 19-199 MBH

POWERFULLY SIMPLE. The Vitocrossal 300, CU3A gas-condensing, floor mounted boiler is a testament to the power of a simple solution. With best-in-class, Viessmann-made components and no primary/secondary piping or low-loss headers required, the CU3A is the perfect choice for residential and light commercial applications – including high temperature heating, cast-iron boiler replacements and multi-zone systems.

Simply ideal for new construction and retrofits.

With its compact design, the Vitocrossal 300 CU3A is simple, fast and easy to install. To replace an old cast-iron sectional boiler, the CU3A is the ideal “drop-in” replacement with simple connection. All the existing system piping remains intact. For new installations, the CU3A alleviates the need for costly piping arrangements. Flue venting is also simplified with the exhaust and intake air connections located at the bottom of the boiler, only 11.5” off the ground, allowing easy connection to existing chimneys.

Advanced condensing technology

Constructed with titanium stabilized SA 240-316Ti stainless steel, the Inox-Crossal heat exchanger provides the ideal conditions for the utilization of the condensate in the hidden heat of the flue gas. The smooth combustion chamber surface and the vertically arranged heat exchanger drains the accumulating condensate and creates a permanent self-cleaning effect which maintains efficiencies up to 98% (95% AFUE), ensures prolonged service life and reduces maintenance.

Wide water passageways

Large water content is contained within the pocket design of the heat exchanger. This allows for simplified system piping with full system flow, eliminating the need for a dedicated boiler pump or primary/secondary piping.

ViCare - the best connection between you and your Viessmann boiler

The ViCare App makes control of your boiler easy and intuitive. The heating schedule wizard quickly adapts the boiler operation to your lifestyle. You can immediately see your potential energy savings on a summary page. The ViCare App also alerts you about changes in heating status so you can quickly reprogram your boiler or contact your heating contractor for assistance.

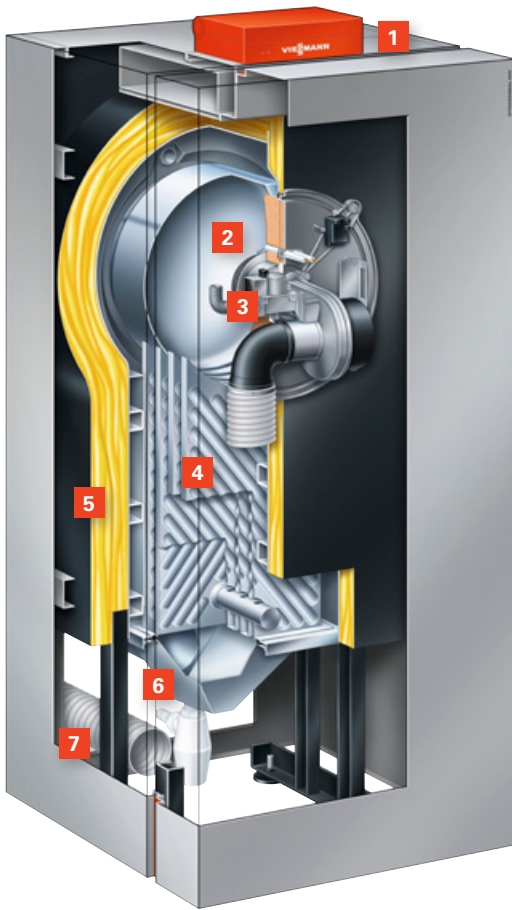
Intelligent combustion control

The proven Matrix dome gas burner with Lambda Pro combustion control automatically adjusts to fluctuating gas qualities and ensures a consistently high combustion efficiency for both natural gas and propane gas.

Simple and powerful Vitotronic control

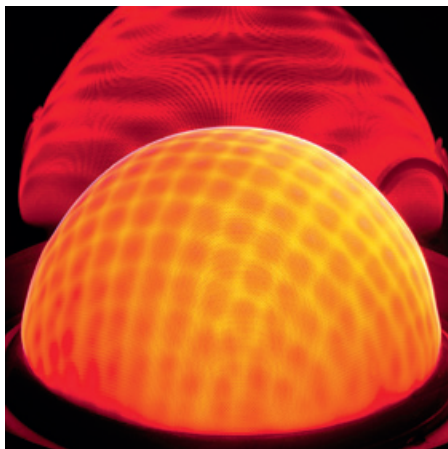
Installing contractors and end users benefit equally from the easy-to-use, flexible Vitotronic 200 KW6B boiler and system control that manages the entire heating system with maximum comfort, precise temperature settings and cost-effective fuel savings. The control menu is logical, intuitive and easy to set up. Features include control up to 3 heating circuits, intelligent DHW control, a variable speed pump output (0-10V), and multiple setback timers. The graphic user interface will display system parameters and solar yield if integrated with a Viessmann solar system.





Vitocrossal 300, CU3A

- 1 Vitotronic 200 HO1B boiler and system control
- 2 Water-cooled stainless steel combustion chamber
- 3 Modulating MatriX dome gas burner
- 4 Stainless steel Inox-Crossal heat exchanger
- 5 Highly effective thermal insulation
- 6 Flue gas collector with condensate drain pipe
- 7 Combustion air inlet connection



The MatriX dome gas burner for exceptionally low-emission combustion, making it a milestone in heating technology.

Features and benefits:

- Compact, floor-standing gas condensing boiler from 19 -199 MBH.
- Multi-boiler installation with 8 boilers up to 1592 MBH.
- High efficiency of 95% AFUE on all models.
- High temperature operation of up to 190°F.
- Inox-Crossal heat transfer surface – 316Ti stainless steel heat exchanger for efficient utilization of condensing technology – self-cleaning effect via smooth stainless steel surfaces.
- No dedicated boiler pump required and eliminates primary/secondary piping.
- MatriX dome gas burner with 5:1 turndown ratio to ensure high efficiency and extremely clean combustion.
- High water volume extends burner run time and reduces cycling.
- Simple commissioning with no field adjustments. A self-calibrating Lambda Pro combustion management system ensures optimal combustion efficiency at all times regardless of gas/air quality.
- Easy conversion from natural gas to liquid propane with no orifice change.
- Durable, reliable, and long service life with Inox-Crossal stainless steel heat exchanger and high mass design.
- Multiple venting options and configurations with vent lengths up to 198'.
- **5-year limited parts warranty for greater piece of mind.**
- **Wifi ready with Vitoconnect 100 and ViCare App provide comfort and control anywhere, anytime with internet access.**
- **ViCare App allows you to remotely program and control your boiler.**
- **ViCare App is free on all iOS and Android operating systems.**



Viessmann Manufacturing
 Company (U.S.), Inc
 45 Access Road
 Warwick, RI 02886
 1-888-288-0667
 viessmann-us.com

Technical Data



Vitocrossal 300, CU3A gas-fired condensing boiler

Model		26	35	45	57
Maximum Input (NG)	MBH	94	125	160	199
Minimum Input (NG)	MBH	19	25	43	43
Net AHRI Rating	MBH	76	101	129	161
AFUE	%	95	95	95	95
Overall Dimension†					
Width	Inches	26	26	26	26
Height	Inches	67	67	67	67
Depth (Length)	Inches	27	27	31.5	31.5
Weight	lbs	269	275	341	352
Boiler Water Content	USG	13.5	13	18.8	18.8
Heat Exchanger Surface	ft. ²	16.7	20.7	34.1	34.1
Maximum Operating Pressure	psig	30	30	30	30
Minimum Gas Supply Pressure					
Natural Gas	"w.c.	4	4	4	4
Liquid Propane Gas	"w.c.	10	10	10	10
Boiler water temperature maximum					
Adjustable high limit (AHL) range space heating (steady state)		190° F	190° F	190° F	190° F
Gas valve connection	NPTM	3/4	3/4	3/4	3/4
Boiler heating supply and return	NPTM	1 1/4	1 1/4	1 1/4	1 1/4
Boiler flue gas connection	Ø Inches	3*	3*	4**	4**
Combustion air supply connection	Ø Inches	3*	3*	3*	3*

Included

Boiler drain
 Pressure relief valve 30 PSI
 Gas ball valve
 T&P gauge
 Air intake adapter 3"
 LPG ready
 Outdoor sensor
 DHW sensor
 Vitoconnect 100

Optional: 2 Pipe Venting

Duravent adapter for CU3A model 45, 57
 Duravent PPS-VSM-AD

Optional: Coaxial Venting

Duravent adapter for CU3A 26, 35
 Duravent 810013138
 Duravent adapter for CU3A 45, 57
 Duravent 810013139

CentroTherm adapter for CU3A 26, 35
 CentroTherm ICTCV0335
 CentroTherm adapter for CU3A 45, 57
 CentroTherm ICTCV030446

* Sized for CentroTherm and Duravent

** Sized for Duravent

For latest technical data, visit viessmann-us.com

